

WALKING BOOTS

EZG8 (EASY GAIT) SERIES

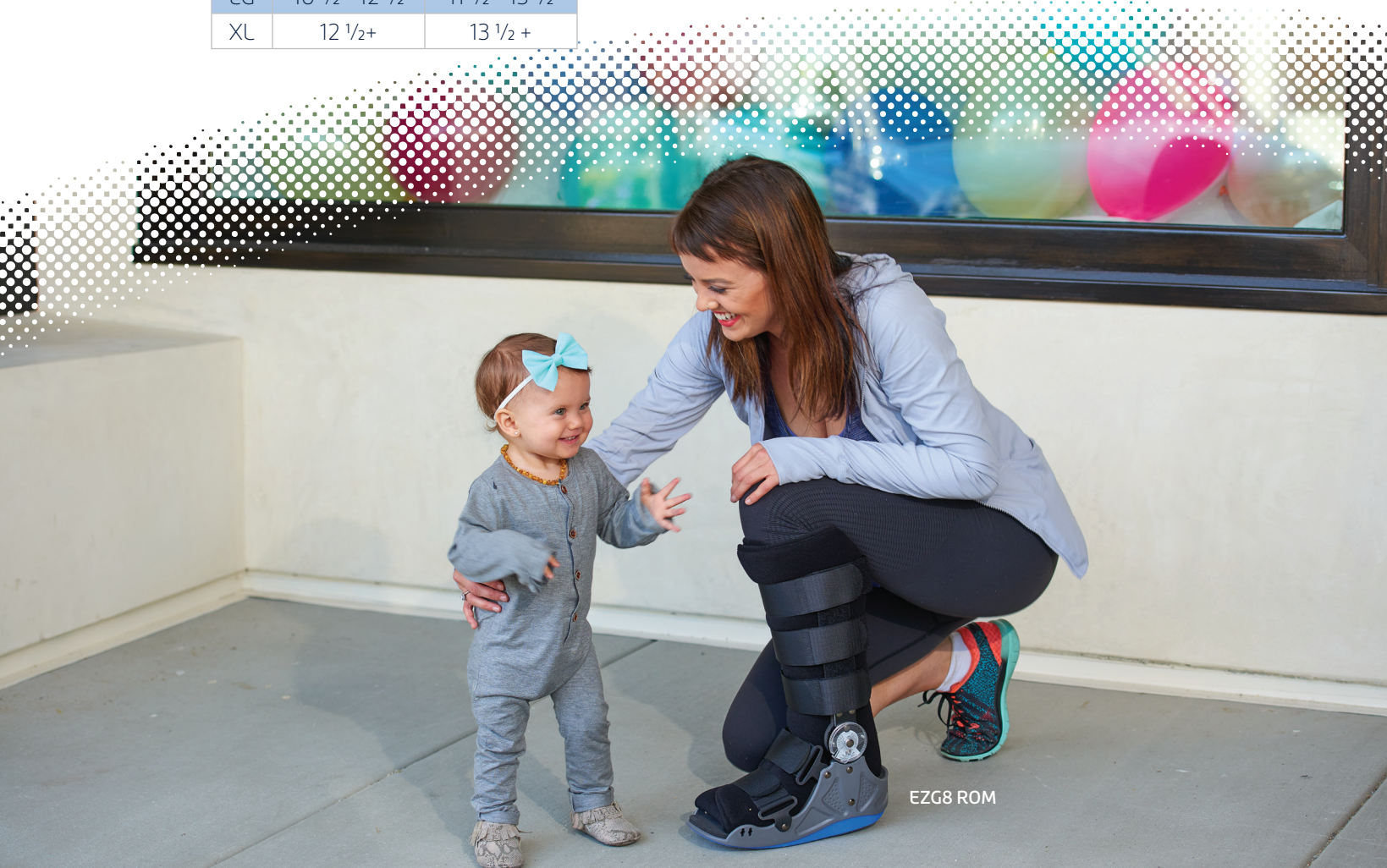
- FEATURES**
- Plastic foot shell
 - Aluminum uprights
 - Molded/padded insole
 - Shock absorbing outer sole rocker
 - Foam bootie
 - Non-elastic straps

- OPTIONS**
- Full height or mid calf uprights
 - ROM hinges (EZG8 ROM Walker)
 - Standard or pneumatic (air bladder) bootie
 - Indoor sanitary outer sole cover

Size	Men's Shoe Size	Women's Shoe Size
XS	4	5.5
SM	4 1/2 - 7	6 - 8
MD	7 1/2 - 10 1/2	8 1/2 - 11 1/2
LG	10 1/2 - 12 1/2	11 1/2 - 13 1/2
XL	12 1/2 +	13 1/2 +



Set the range of motion for dorsiflexion and plantar flexion.



WALKING BOOTS AND SPLINTS

Townsend/Thuasne USA • ThuasneUSA.com • 4615 Shepard Street, Bakersfield, CA 93313 • 800.432.3466
Quinn Medical/Thuasne USA • Quinnmedical.com • 1000 Calle Cordillera, San Clemente, CA 92673 • 855.784.6600



WALKING BOOTS

XLR8 (ACCELERATE) SERIES

FEATURES

- Molded plastic shell with anterior plate
- Pneumatic bladder with built-in dual air pumps
- Foam bootie with molded/padded insole
- Shock absorbing outer sole rocker
- Patented adjustable toe guard (3 positions)
- Non-elastic straps

OPTIONS

- Full height or mid calf
- Heel wedges
- Indoor sanitary outer sole cover
- Patented adjustable toe guard (3 positions)

Size	Men's Shoe Size	Women's Shoe Size
XS	2 - 4	3 1/2-5
SM	4 - 7	5 - 8
MD	7 - 10	8 - 11
LG	10 - 13	11 - 15
XL	13+	15+



XLR8 Full Shell Walker



XLR8 Full Mid Calf Shell Walker

WALKING BOOTS

ACHILLES/ADJUSTA WALKER

FEATURES

- Bendable metal uprights
- Softer, durable rocker bottom
- Patented sliding upright (alignment adjustment) ensures gait optimization
- Soft inner foot bed
- Posterior Stablelock shell prevents heel slippage

OPTIONS

- Pneumatic and non-pneumatic versions
- Heel wedges

Size	Men's Shoe Size	Women's Shoe Size
SM	3 1/2 - 7	4 1/2 - 8
MD	7 - 10	8 - 11
LG	10 - 13	11 - 15
XL	13 - 16	15+



PEDIWALKER

TOWNSEND PEDIWALKER

FEATURES

- Durable alternative to casting for children
- Lightweight, conformable plastic uprights with metal reinforcement bridge
- Simple integrated strapping makes it easy to apply
- Reinforced composite rocker bottom allows for natural gait
- Extra sturdy for active children
- Low profile and non-slip tread
- Available in 3 sizes

Size	Children's Shoe Size
SM	5 - 8
MD	9 - 13
LG	13 - 3



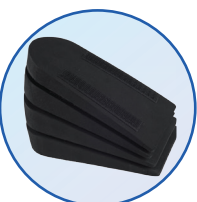
Adjustable Uprights

Both uprights can be positioned to align with mid line on the leg optimizing natural gait.



Soft, Durable Rocker Bottom

The unique material and tread design of the rocker bottom delivers a cushioned sensation when the patient hits heel strike, acting like a natural shock absorber.



Achilles Heel Wedges

Soft and comfortable heel wedges decrease in angle as the healing process continues.



Integrated strapping



Soft breathable boot liner

SPLINTS

NIGHT SPLINT

FEATURES

- Adjustable, non elastic resistant straps allow continuous calm stretching protocols
- Open cell foam liner is washable and semi-permeable to eliminate excessive heat absorption
- Comfortable, non-irritable strap pads help protect against discomfort on bony anatomy
- Ventilated, lightweight medical grade plastic shell
- Easy to use, convenient release buckles
- Non-slip outer sole
- Standard sizes (based on patient's shoe size)

RECOMMENDED L-CODE 4396

Size	Men's Shoe Size	Women's Shoe Size
SM	3 1/2 - 7	4 - 7 1/2
MD	7 - 10	8 - 10 1/2
LG	10 1/2 - 13	10 1/2 - 15



NOX SPLINT

FEATURES

- Hinge design allows for individual comfort and outcomes
- Adjustable tension strap
- Position indicator window shows tension level
- Well padded with interior air bladder
- Wider metatarsal region
- Non-skid sole

OPTIONS

- Optional accessory strap

Size	Men's Shoe Size	Women's Shoe Size
SM/MD	5 - 9	6 - 10
LG/XL	9 1/2 - 14	10 1/2 - 15



XLR8